

# YOUR COMMITTEE UPDATE

1st February 2024



@union\_activities



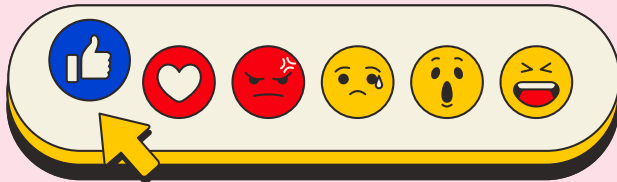
@unionactivities



@unionactivities



unionactivities@le.ac.uk



## GOOD SOCIAL MEDIA PRACTICES

We would like to re-emphasise the importance of adhering to regulations when managing your social media accounts.

We encourage you to think carefully before posting content, especially when under the influence, to avoid any future breaches of conduct or regulations.

It's important that you utilise good practices to protect yourself and your student group.

Please remember that:

- Unauthorised use of third-party logos, including the logo of the University of Leicester or companies, should be avoided.
- Inclusivity should always be considered, and avoid the use of potentially abusive or discriminative language or images.

## WHAT WE'RE COVERING:

- [Social Media Use](#)
- [General Reminders](#)
- [Awareness in February](#)
- [Executive Elections](#)
- [Leicester Strictly](#)
- [International Students Mixer](#)
- [Go Green Week](#)
- [Staff Introduction](#)



## REMINDER

Here's a few reminders and announcements to keep in mind:

- ROOM BOOKING REQUESTS must be submitted with at least 2 weeks notice.
- You can now only enter the Percy Gee Building out of hours via Mayor's Walk lower ground floor or centenary square entrance
- COMMITTEE HELP: If you have committee positions that need filling or looking for support starting up a new society, we can help with advertising it. Please get in touch and we can look to do so in the next edition of this newsletter!

# EXECUTIVE ELECTIONS UPDATE



## What are the Executive Elections?

Perhaps you've heard that the Executive Elections are coming, but don't really understand what they are. The Executive Elections are where all students get to choose who they want to represent them in the next academic year through voting on the Students' Union website. This includes voting to elect the Full-Time Officer team and 10 Part-Time Officers.



## Why should societies care about the Executive Elections?

We asked Jack McDonald, the current Activities Officer, why students involved with societies should run for the Sports and Societies role.

"There are a bunch of ways that you can make an impact on how Societies work at Leicester as Sports & Societies Officer. You can work closely with the Activities Team on a variety of things such as:

- Committee Training & Handover
- Affiliation Documents and what they look like
- New Student Group Application
- Grant Funding
- Networking Events or conferences
- Feedback and improvements within the SU and the processes.

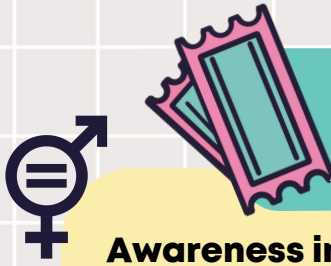
You won't be managing the Activities Team, so you can choose how involved you want to be in these areas and what you want to prioritise. If you think that there are other things the Activities Team should be working on, then you can inform them.



## How can I get involved?

If you have seen a role that you would like to run for, you can [nominate yourself here](#). It takes just 10 minutes to stand in the elections: all you need is a photograph and a 200-word manifesto saying why students should vote for you.

You don't need to have any prior experience: all officers will receive training. All you need is enthusiasm to learn more and the passion to represent students and their interests!



## UPCOMING EVENTS AND IMPORTANT INFORMATION

### Awareness in February

February has several awareness days throughout the month. It is important to be aware of these as they may be relevant to some if not all of your members, as well as being topics worth talking about in your Wellbeing Wednesday's or for fundraising events.

Whole Month - [National LGBTQ+ History Month](#)  
1st - [Time to Talk Day](#) (Mental Health Awareness)  
5th-11th - [Race Equality Week](#)  
5th-11th - [National Apprenticeship Week](#)  
6th - [Safer Internet Day](#)  
17th - [Random Acts of Kindness Day](#)



### Dance Sport Leicester Strictly Event

[Mon 12th February 2024](#)  
[O2 Academy 6:30pm - 10:30pm](#)  
Student group DanceSport and the SU are proud to present Leicester Strictly!

Join us for an evening of glitz, glamour and lots of dancing for a great cause. You can [purchase tickets here!](#)



### International Students Mixer

[1Thursday 8th February 2024](#)  
[Charles Wilson Global Lounge 12-2pm](#)  
Calling all international students and national/cultural groups!

We are holding an international students mixer event on the 9th full of social opportunities, snacks, drinks and workshops. We welcome national/cultural student groups to get involved, check your emails for more information on how!



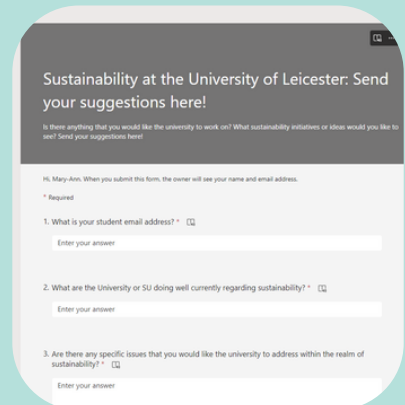
# SUSTAINABILITY

## Sustainability Across Campus Survey

Alongside our Sustainability officer we have created a survey about sustainability at the university to see what changes students want to see.

Is there anything that you would like the university to work on?  
What sustainability initiatives or ideas would you like to see?

Then click on the image to the right or [this link](#) to submit your ideas!



Sustainability at the University of Leicester: Send your suggestions here!

Is there anything that you would like the university to work on? What sustainability initiatives or ideas would you like to see? Send your suggestions here!

Hi, Mary-An, When you submit this form, the owner will see your name and email address.

\* Required

1. What is your student email address? \*

Enter your answer

2. What are the University or SU doing well currently regarding sustainability? \*

Enter your answer

3. Are there any specific issues that you would like the university to address within the realm of sustainability? \*

Enter your answer



Go Green Week is back! Taking place from the 12th-16th February 2024.

There are various events that are run by some societies and students alongside Green Bubble, and we want to give everybody the chance to get stuck in with the week's events. There are various ways you can get involved whether you want to make small or large impact. From a social media post about the topic, to running an event or campaign targeted at awareness on sustainability!

We want to encourage all societies to consider how they could play their part, or if you are already planning to do so then give us a shout and we can include it in the week's itinerary.

## STAFF INTRODUCTION

**Hi, I'm Dawn and I work as a Student Adviser for the Advice Service here in the SU!**

Fun Fact: I have a 'selective hearing' pooch 'Syd' and two sibling cats 'Batman and Jess'

I am passionate about empowering, nurturing and listening to staff and students alike and the SU is my kind of fit personally and professionally. I love the fact that no two days are the same and I love supporting the students here and feeling like I 'make a difference'.

I love gardening, reading, laughing, history, the countryside (especially Yorkshire – it's like coming home) and have just bought my first campervan!

